

NOTE FROM NORM:

"The data represents less degradation of the DuraEdge products compared to the (Company A) and (Company B) products, respectively. The results suggest that DuraEdge products have greater aggregate stability than both the (Company A) and (Company B) products. The results suggest that the DuraEdge products hold a comparable amount of water as the other two product lines."

NORM HUMMEL
PRESIDENT - HUMMEL & CO. INC.

Sieve Size*	Particle Size (mm)	ProSlide Play Ball!	ProSlide Pro	ProSlide Platinum	Company A	Company B
		% retained	% retained	% retained	% retained	% retained
#4	>4.76	0.0%	0.0%	0.0%	0.0%	0.0%
#6	3.36 - 4.76	0.0%	0.0%	0.0%	0.0%	0.0%
#8	2.38 - 3.36	18.8%	11.2%	0.7%	12.1%	10.4%
#10	2.00 - 2.38	15.3%	45.7%	20.8%	24.7%	29.0%
#12	1.68 - 2.00	15.7%	30.2%	31.9%	22.1%	25.8%
#14	1.41 - 1.68	17.5%	11.2%	29.8%	19.0%	24.0%
#16	1.19 - 1.41	15.9%	1.2%	13.4%	11.1%	6.2%
#18	1.00 - 1.19	11.8%	0.25%	1.0%	4.8%	2.0%
#20	0.841 - 1.00	3.5%	0.07%	1.1%	2.6%	0.9%
#30	0.595 - 0.841	0.7%	0.07%	0.1%	2.3%	0.5%
#40	0.420 - 0.595	0.1%	0.05%	0.1%	0.8%	0.3%
Pan	<0.420	0.7%	0.12%	0.1%	0.4%	0.75%

INDICATES MINIMUM 95% OF PARTICLES WITHIN SIZE RANGE

* SIEVE SIZE PER ASTM E11

ASTM C136 - SIEVE ANALYSIS FOR FINE AND COARSE AGGREGATES

ADDITIONAL DATA AVAILABLE UPON REQUEST



Play Ball!



PROFESSIONAL

STANDARDIZED TESTING FOR CALCINED CLAY PROFESSIONAL GRADE

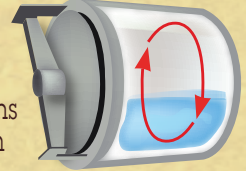


PLATINUM

	ProSlide Play Ball!	ProSlide Pro	ProSlide Platinum	Company A	Company B
ASTM D7428					
Micro Deval Loss %	6.2%	5.2%	4.6%	12.0%	11.2%
ASTM D2216					
% Moisture as Received	0.2%	0.2%	0.2%	2.8%	1.2%
ASTM E2399					
Initial Media Density (lb/ft3)	45.1	44.2	43.0	43.2	45.1
Max Media Water Retention	44%	42%	44%	45%	46%
Total Pore Space	71%	74%	73%	73%	83%

SUMMARY OF MICRO DEVAL TEST METHOD:

ASTM D7428 - The Micro Deval Test is a measure of abrasion resistance and durability of mineral aggregates resulting from a combination of actions including abrasion and grinding with steel balls in the presence of water.



ASTM E2399

MAX MEDIA WATER RETENTION:

The quantity of water held in a media material that has been subjected to a specific amount of compaction and hydrated by immersion to simulate prolonged exposure to both foot traffic and rainfall.

INITIAL MEDIA DENSITY - density as received

ASTM D7428 - RESISTANCE OF FINE AGGREGATE TO DEGRADATION BY ABRASION IN THE MICRO-DEVAL APPARATUS

ASTM E2399 - MAXIMUM MEDIA DENSITY FOR DEAD LOAD ANALYSIS OF VEGETATIVE (GREEN) ROOF SYSTEMS

DURA★EDGE

www.duraedge.com



THE PROFESSIONAL EDGE ON PARTICLE SIZE